

ALL TERRAIN CRANE

ZAT1500
PRODUCT MANUALS

Zoomlion Lifting Machinery Company



ZOOMLION

ZOOMLION LIFTING MACHINERY COMPANY

Address: Zoomlion Quantang Industrial Park, Changsha Economic-Technological Development Zone, China
Find out more details at: en.zoomlion.com Copyright © 2014 Zoomlion. All Rights Reserved.
Reproduction and copying any part of the Contents is not allowed for any purposes without Zoomlion's written approval.



ZOOMLION

Vision Creates Future

CONTENTS

ZAT1500 Lifting capacity	01 / 02
ZAT1500 Technical data	03 / 04
ZAT1500 Overall view / Lifting height chart	03 / 04
ZAT1500 Rated lifting capacity table	05 / 14
ZAT1500 Lifting height chart	15 / 16





72
Max. lifting height of main boom

87
Max. lifting height of top

7.8×8.43
Outrigger spread (W×L)



ZAT1500 Lifting capacity

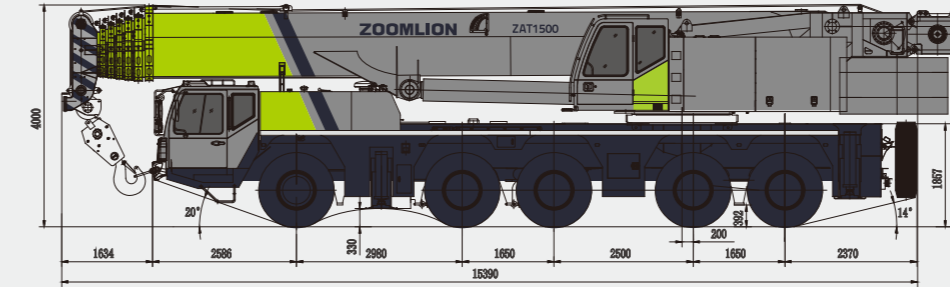
- This high-tech product, combining mechanical, electrical and hydraulic systems as a whole, has so many advantages, such as good control performance, excellent micro-positioning performance, great lifting capacity and super lifting height, that it is active in various fields.
- The 5-axle (3 axles driven and all axles steered) full-width special purpose chassis is manufactured by Zoomlion, providing wide vision, spacious cab and luxurious decoration.
- The latest electro-hydraulic proportional directional control valve with load sensing function, multiple plunger variable pumps and open / closed variable system ensure that each executive mechanism makes full use of its work capability.
- The safety devices, such as relief valve, balance valve, hydraulic lock and brake valve, etc. in the hydraulic system, are against rupture of pipes and hoses.



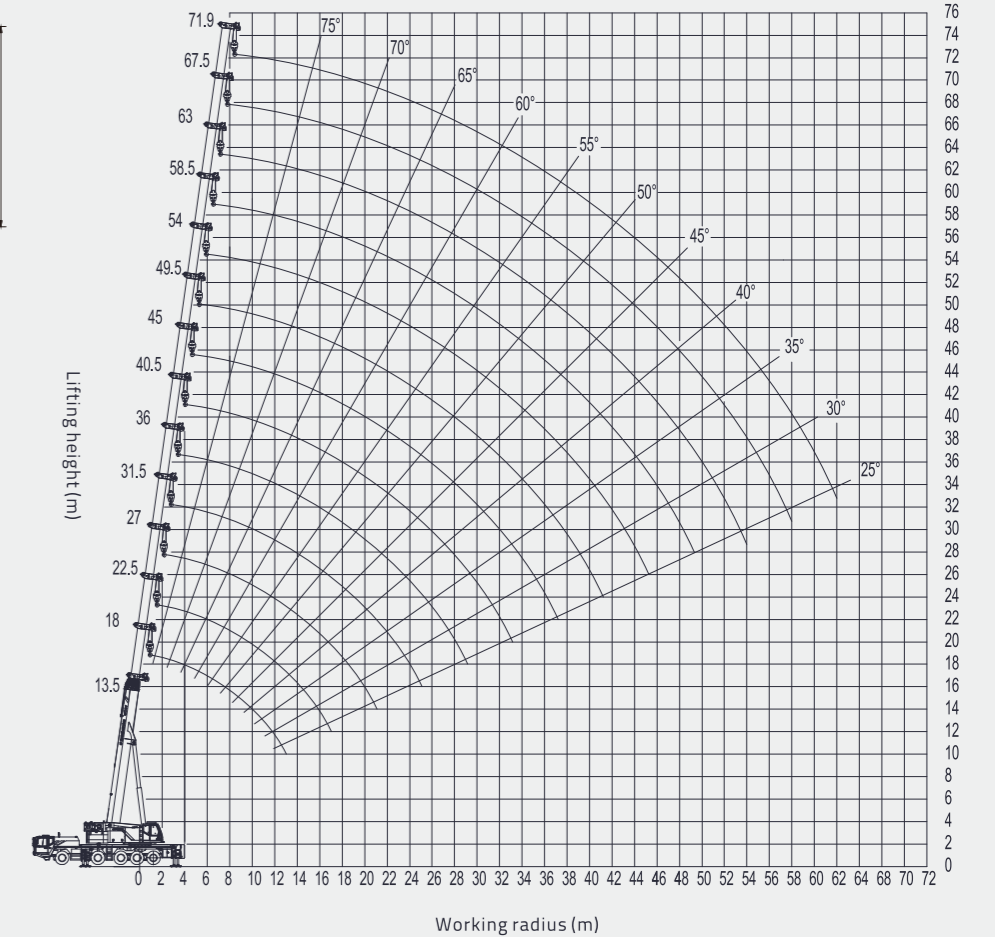
ZAT1500 Technical data

Item	Value	Remarks	
Working performance	Max. rated lifting capacity	kg 150000	At 3 m radius
	Max. load moment of basic boom	kN.m 4704	At 6 m radius
	Max. load moment of main boom (fully extended)	kN.m 1505	At 32 m radius
	Max. lifting height of basic boom	m 13.0	
	Max. lifting height of main boom	m 72	
	Max. lifting height of jib	m 87/(95)	
Working speeds	Max. hoist rope speed (Main winch)	m/min. 114	
	Max. hoist rope speed (Auxiliary winch)	m/min. 74	At the 4 th layer
	Boom derricking up time	s 94	At the 3 rd layer
	Boom extending time	s 860	
	Max. slewing speed	r/min. 1.4	
	Max. height above sea level	m 2000	
Driving	Max. driving speed	km/h 75	
	Max. gradeability	% 40	
	Min. turning diameter	m ≤ 20	
	Min. ground clearance	mm 305	
	Limits for exhaust pollutants and smoke	Conform to related standards	GB3847-2005/GB17691-2005 (National Stage IV)
	Fuel consumption per hundred kilometers	L 76	
Mass	Deadweight in driving condition	kg 60000	
	Complete vehicle kerb mass	kg 59805	
	Load on axles 1, 2 and 3	kg 12000	
	Load on axles 4 and 5	kg 12000	
	Overall dimensions (L × W × H)	mm 15390 × 3000 × 4000	
	Outrigger spread (L)	m 8.43	
Dimension	Outrigger spread (W)	m 7.8(fully extended), 5.3(intermediately extended)	
	Main boom length	m 13.5 – 72	
	Boom angle	° -0.5 – 82	
	Jib length	m 11, 18.6	
	Jib + extension length	m 26.6	
	Offset	° 0, 30	

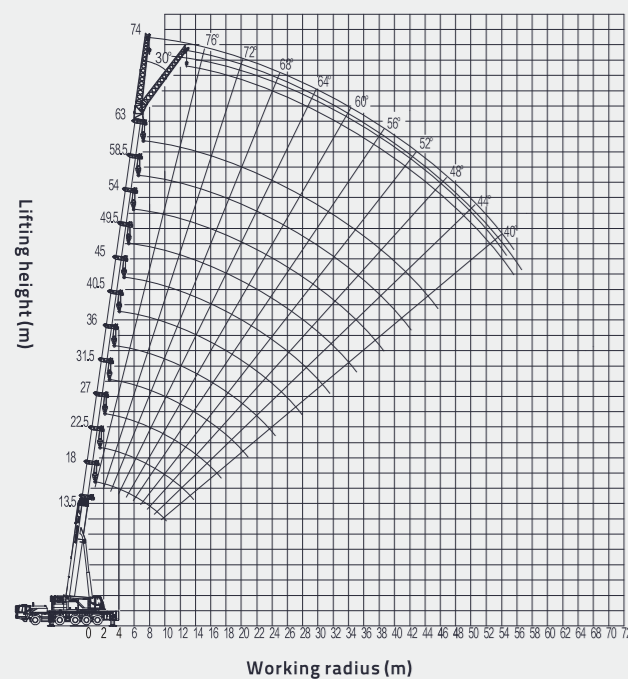
ZAT1500 Overall view / Lifting height chart



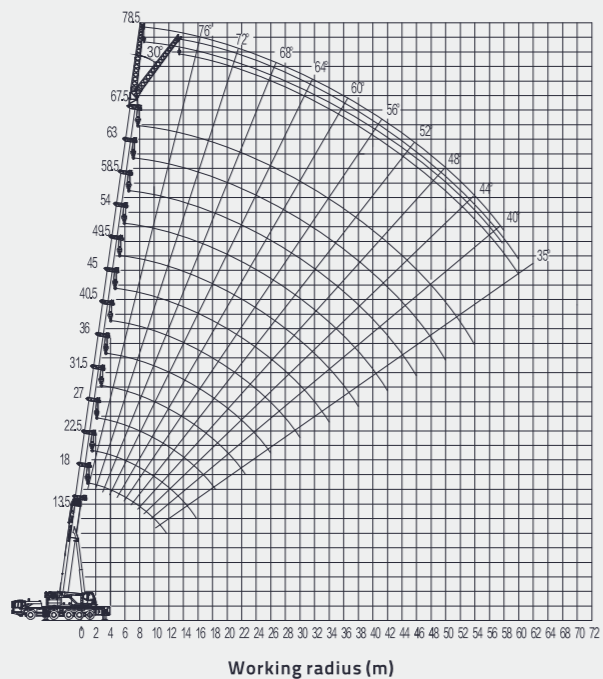
Unit: Metric mm



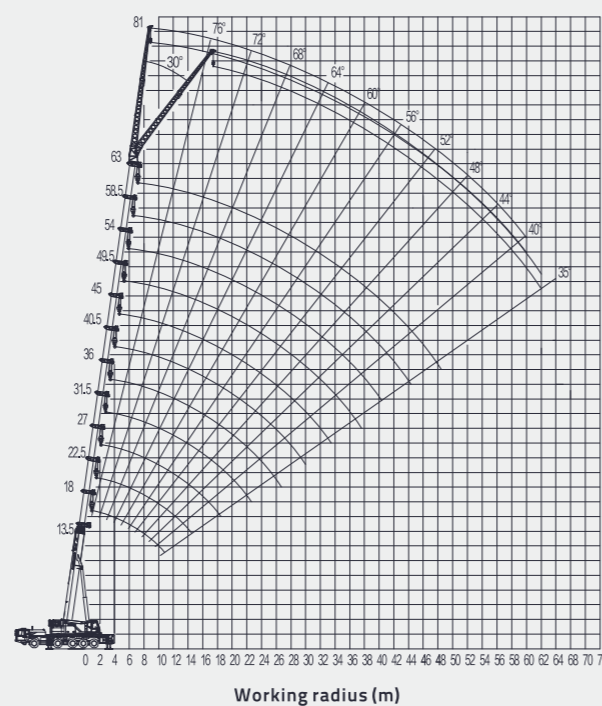
Main boom + 11 m jib



63 m main boom + 11 m jib

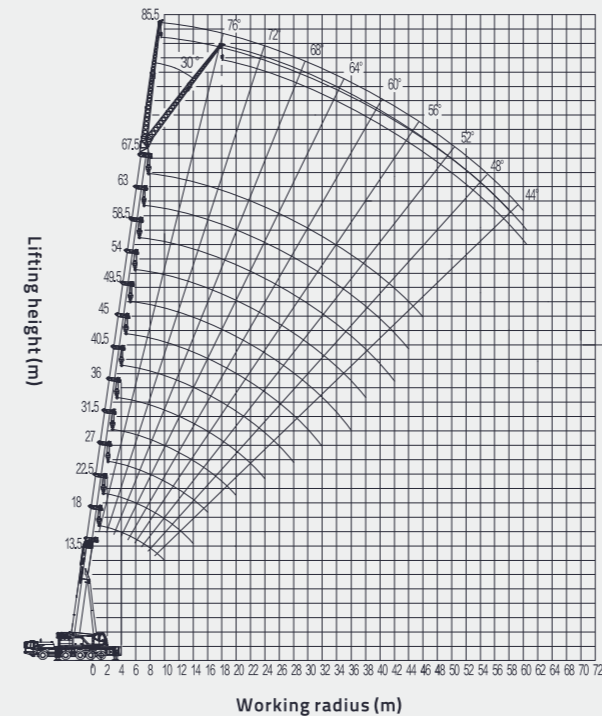


67.5 m main boom + 11 m jib

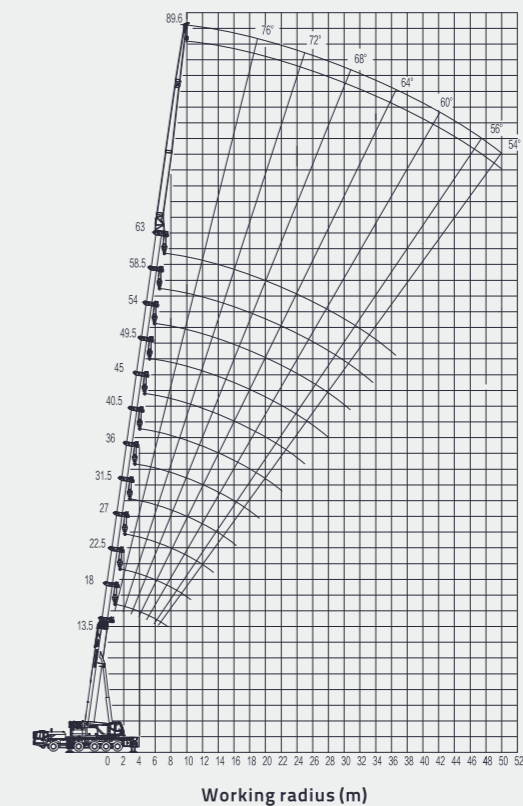


63 m main boom + 18.6 m jib

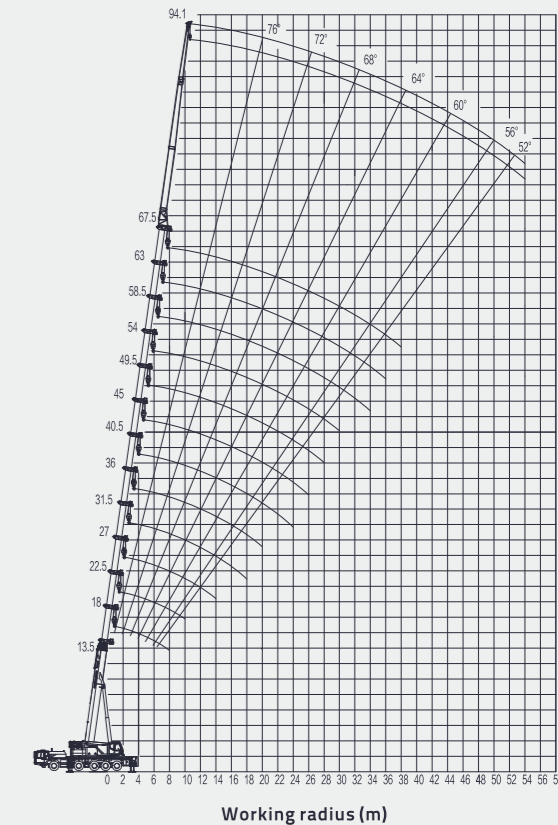
Main boom + 26.6 m jib



67.5 m main boom + 18.6 m jib



63 m main boom + 26.6 m jib



67.5 m main boom + 26.6 m jib